

Monthly Footfall

	Year to Date % Change		Year on Year % Change		Month on Month % Change	
	2015	2014	2015	2014	2015	2014
Guildford	▲ 1.5 %	▲ 2.3 %	▼ -1.8 %	▲ 6.6 %	▲ 1.4 %	▲ 3.5 %
South East	▼ -2.1 %	▼ -0.9 %	▼ -5.7 %	▼ -0.9 %	▲ 2.7 %	▲ 3.8 %
UK	▼ -1.5 %	▼ -0.1 %	▼ -2.6 %	▼ -1.6 %	▲ 3.8 %	▲ 4.2 %

Headlines

Footfall for the year to date is 1.5% up on the previous year.

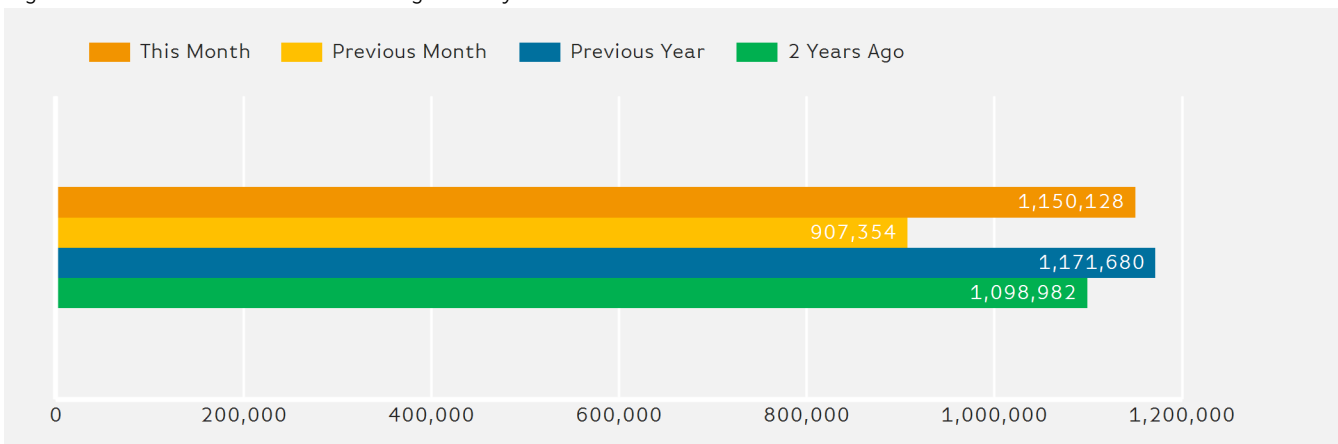
Footfall month commencing 1 June 2015 was 1,150,128.

The busiest day in month commencing 1 June 2015 was Saturday 13 June with 53,652 visitors.

The peak hour of the month was 15:00 on Saturday with footfall of 6,512

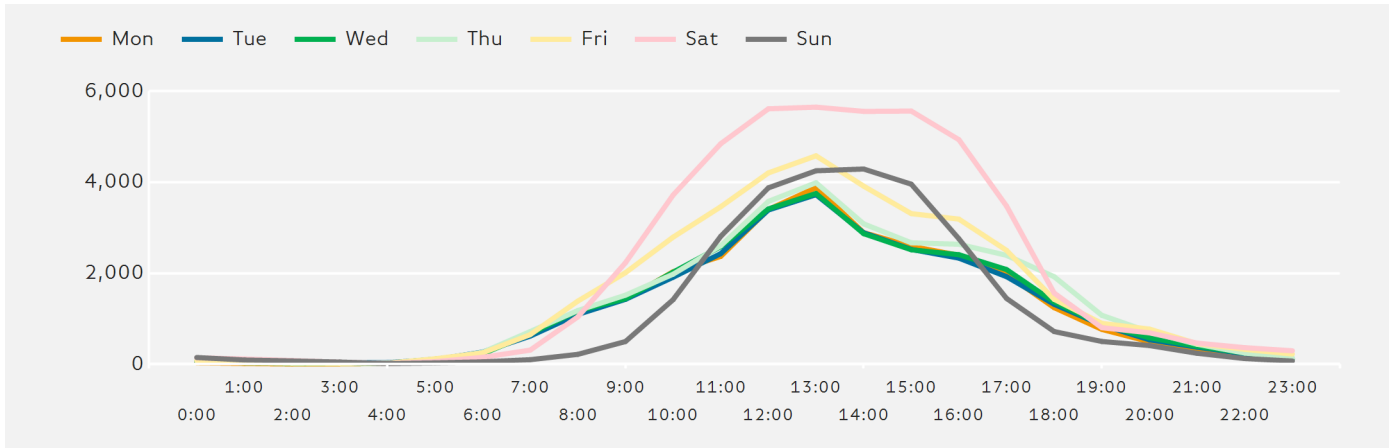
Footfall Totals by Month

Figures shown below are calculated using monthly totals.



Footfall by Hour

The figures shown below are calculated using a weekly average



Weather



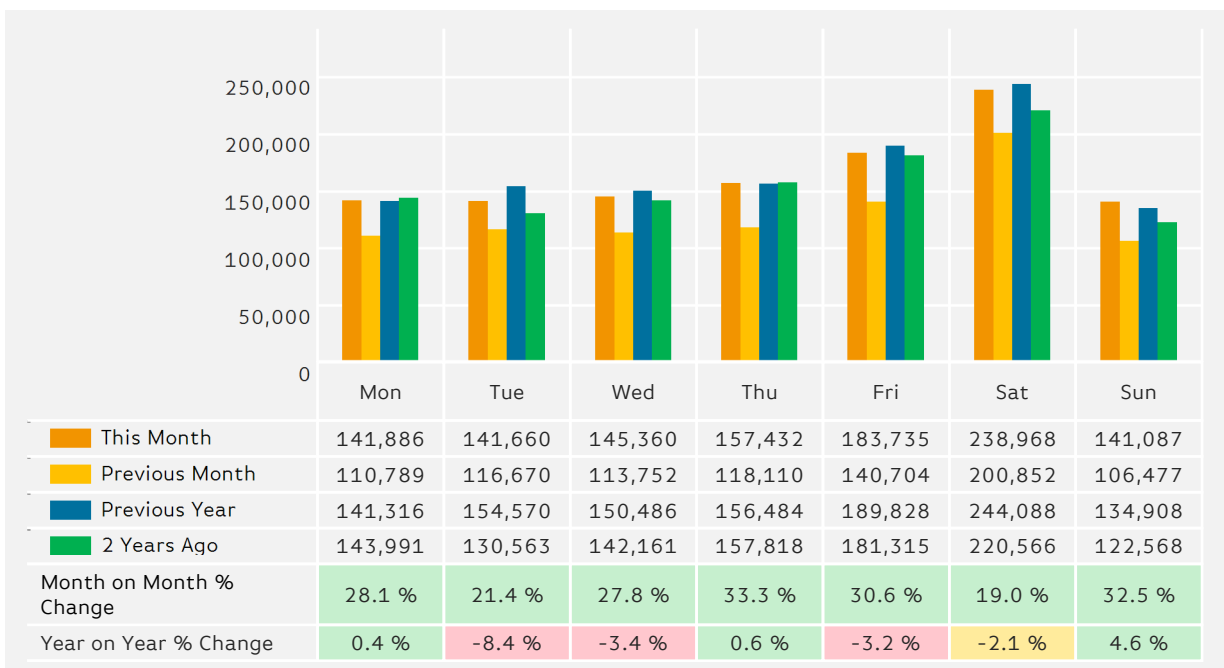
Number of days this month	22	10	3
Number of days same month last year	34	1	

Average Temperature

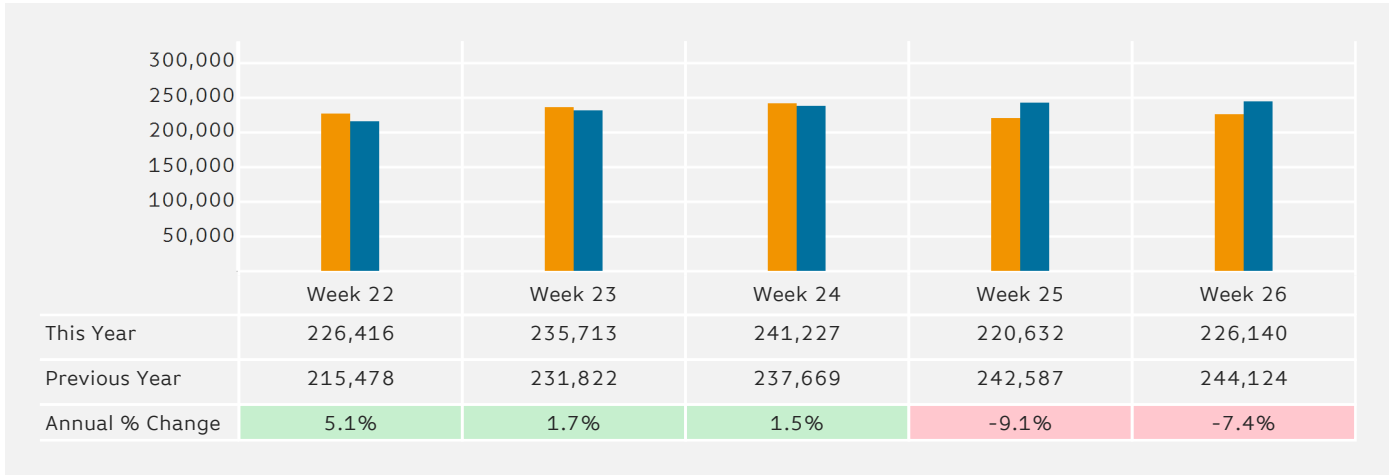
Average Temperatures	Maximum Temperature	Minimum Temperature
2015	21.6	10.6
2014	20.9	10.9

Footfall by Day

The figures shown below are calculated using monthly totals.



Footfall by Week of Month



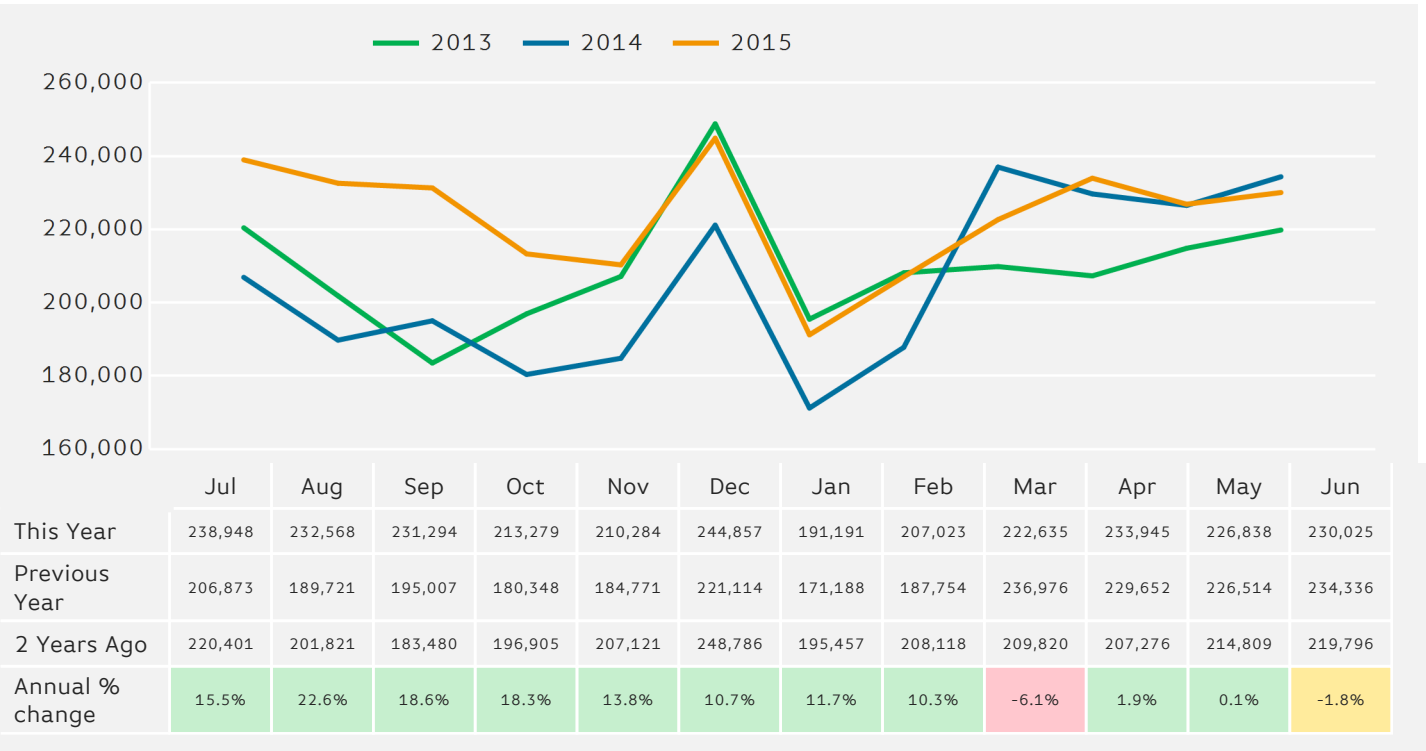
Footfall Totals

The figures shown below is calculated using weekly averages.



Footfall by Month

The figures shown below are calculated using weekly averages.



Year to Date % Change is the annual % change in footfall from January of this year compared to the same period last year.
 Year on Year % Change is the % change in footfall for this week compared to the same week in the previous year.
 Week on Week % Change is the % change in footfall for this week from the previous week.