

**Monthly Footfall**

	Year to Date % Change		Year on Year % Change		Month on Month % Change	
	2015	2014	2015	2014	2015	2014
Guildford	▲ 0.3 %	▲ 5.9 %	▼ -3.5 %	▲ 22.6 %	▼ -3.1 %	▼ -2.7 %
South East	▼ -2.6 %	▼ -1.0 %	▼ -3.1 %	▼ -0.1 %	▼ -4.1 %	▼ -6.3 %
UK	▼ -1.6 %	▼ -0.6 %	▼ -2.3 %	▼ -2.9 %	▼ -0.7 %	▼ -1.2 %

**Headlines**

Footfall for the year to date is 0.3% up on the previous year.

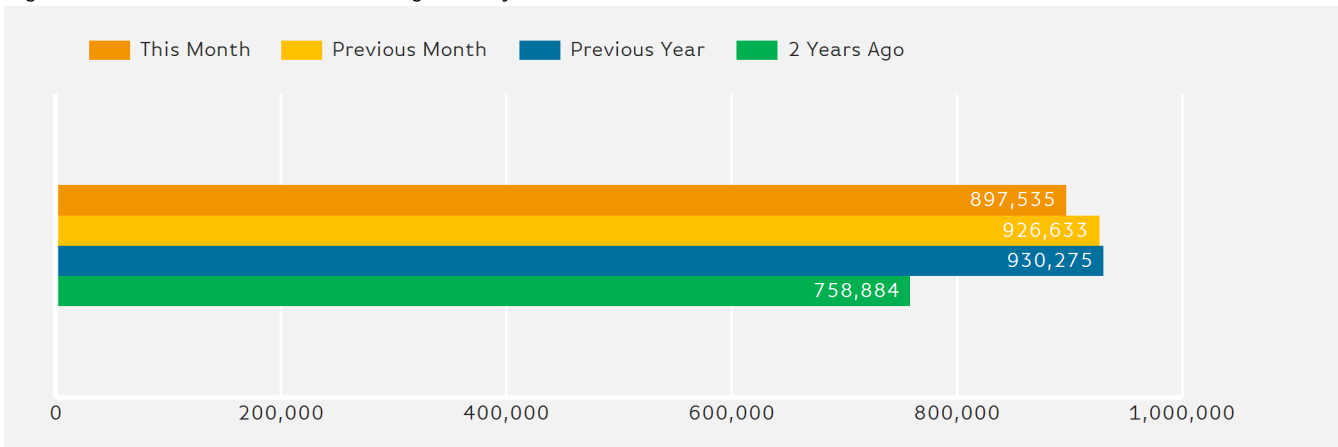
Footfall month commencing 3 August 2015 was 897,535.

The busiest day in month commencing 3 August 2015 was Saturday 15 August with 44,873 visitors.

The peak hour of the month was 14:00 on Saturday with footfall of 6,011

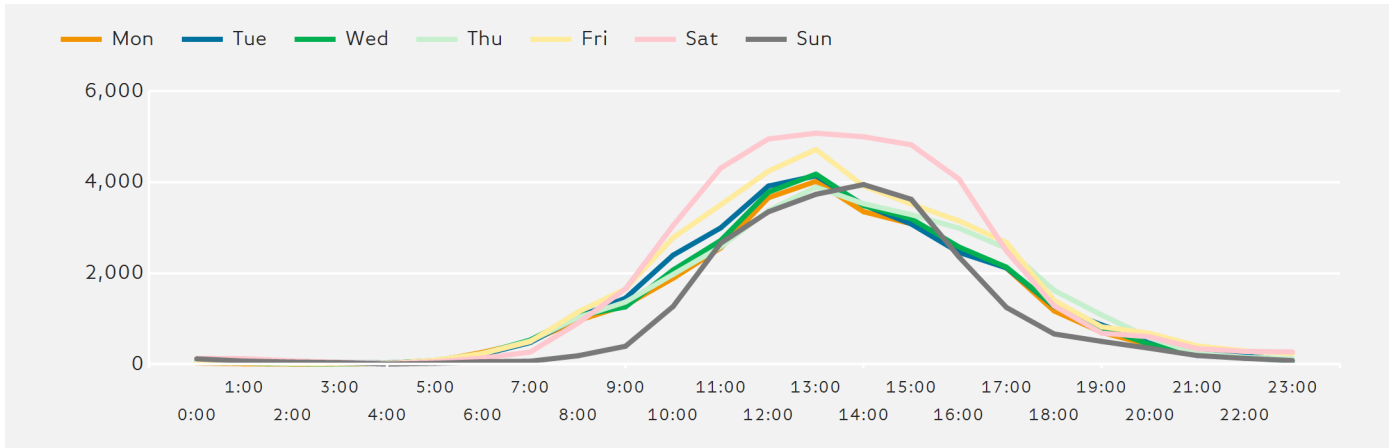
**Footfall Totals by Month**

Figures shown below are calculated using monthly totals.



### Footfall by Hour

The figures shown below are calculated using a weekly average



### Weather



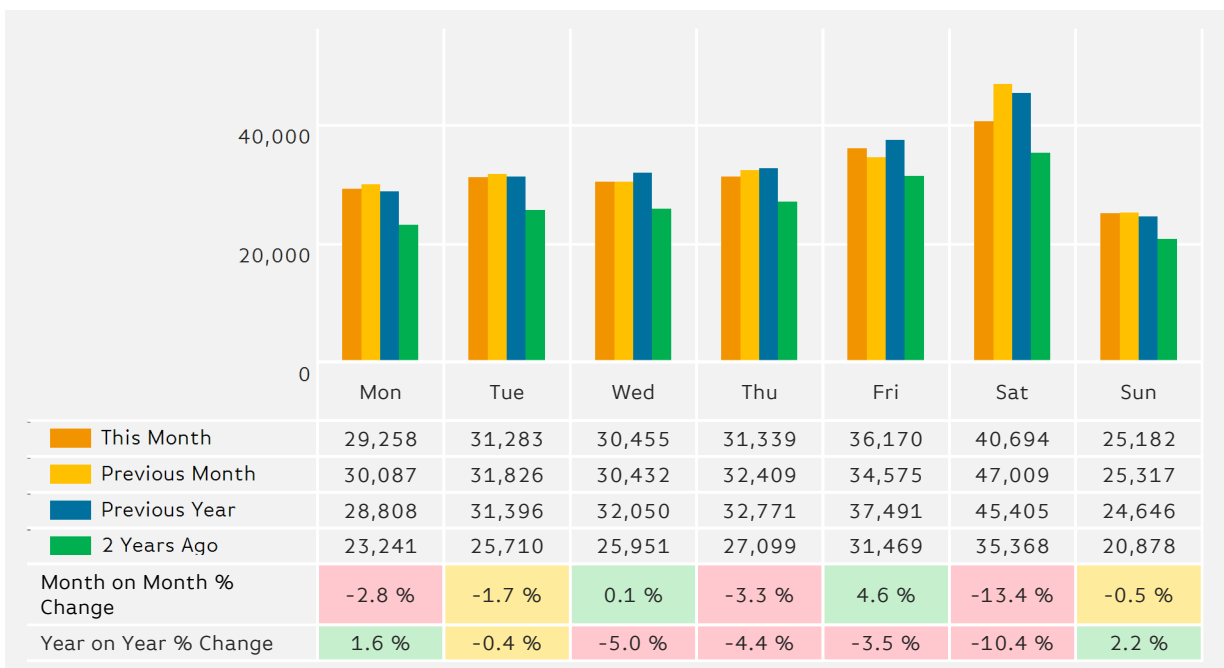
Number of days this month	20	8	
Number of days same month last year	16	2	10

### Average Temperature

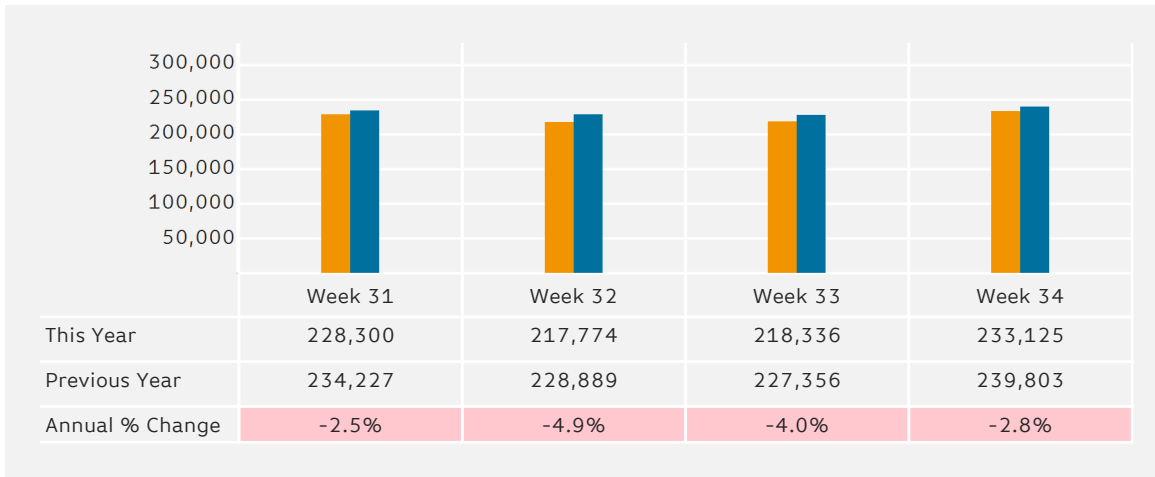
Average Temperatures	Maximum Temperature	Minimum Temperature
2015	21.0	12.3
2014	20.9	11.1

### Footfall by Day

The figures shown below are calculated using weekly averages.



### Footfall by Week of Month



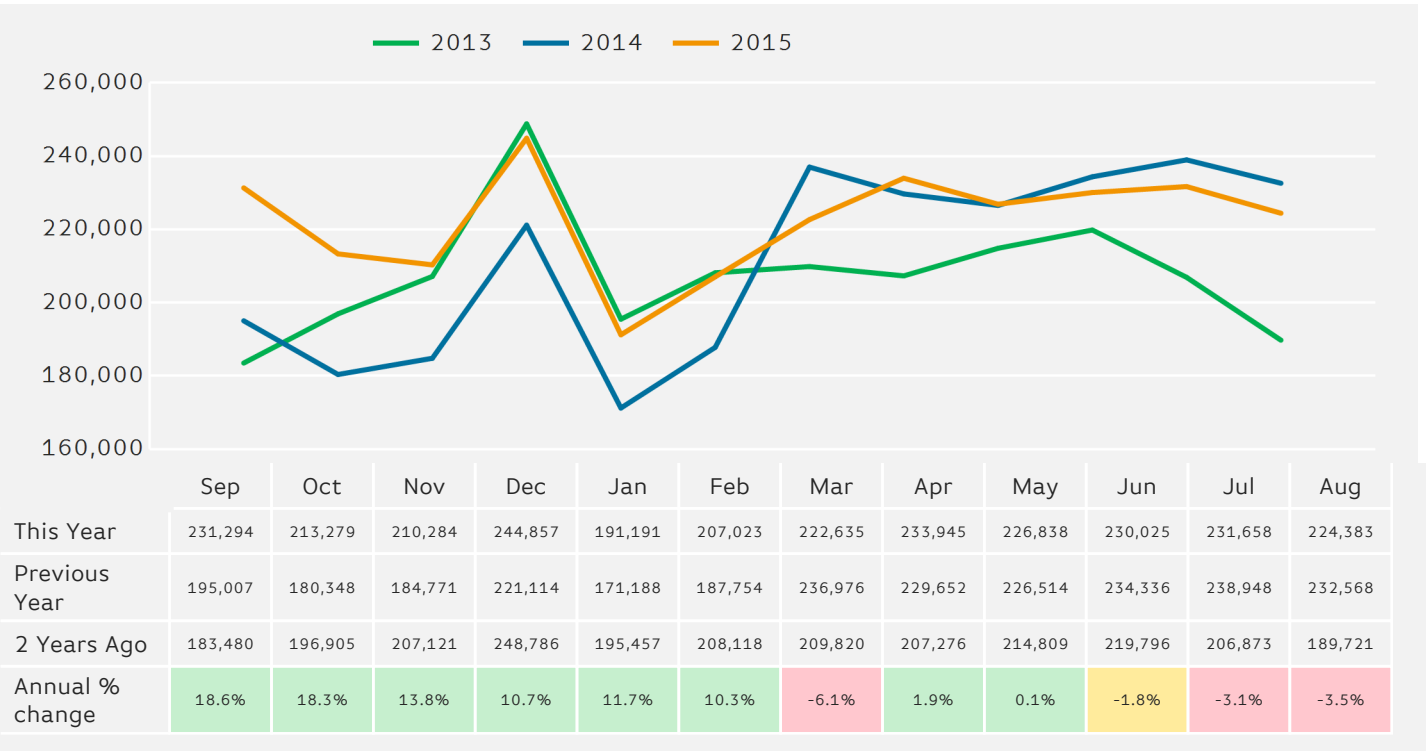
### Footfall Totals

The figures shown below is calculated using weekly averages.



### Footfall by Month

The figures shown below are calculated using weekly averages.



Year to Date % Change is the annual % change in footfall from January of this year compared to the same period last year.  
 Year on Year % Change is the % change in footfall for this week compared to the same week in the previous year.  
 Week on Week % Change is the % change in footfall for this week from the previous week.